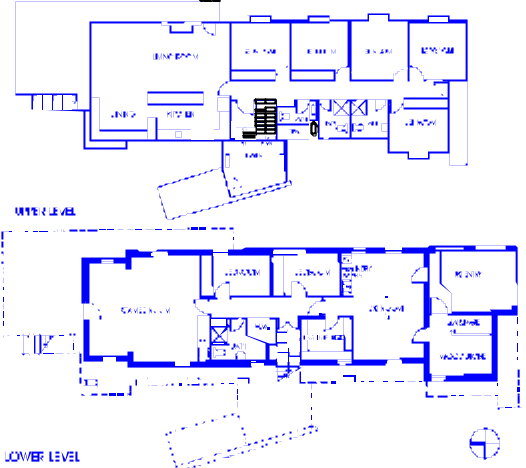
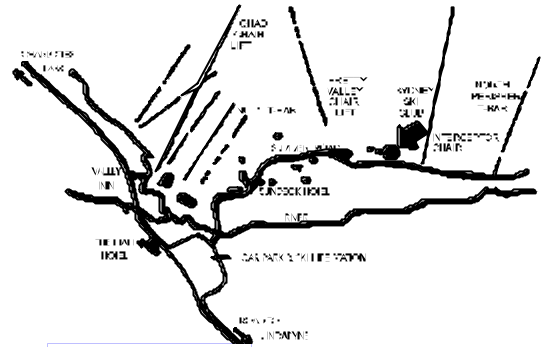


PERISHER LODGE

The Perisher Lodge, extensively renovated during summer 1996/1997, is situated on the side of a hill not far from the North Perisher T-Bar and is most easily accessible by ski from the Pretty Valley Chair Lift or overland from the area above the Sundeck Hotel. Access to skiing from the Lodge can be either via the North Perisher Lift, Pretty Valley Chair or Interceptor Chair, the latter being the access lift to Blue Cow/Guthega resort. During winter the Lodge is only accessible by oversnow transport and Members must make their own arrangements for transport of themselves and their gear to the Lodge.

The Lodge is a two-storey structure having a timber upper storey with balcony built on a stone base. It contains five twin-bed bedrooms and two single-bed bedrooms to accommodate a total of 12 persons and it is organised on a self help basis. Members supply their own food and towels (**bed linen**, blankets, doonas and other bedding are provided) and the care and cleaning of the Lodge is up to Members. The Club does not supply food or other provision but does supply basic cleaning materials and the like for the care of the building.

The ground floor contains ski and storage rooms, drying room, games room, bathroom and the two single-bed bedrooms. There is also an internal firewood store. The upper storey contains five twin-bed bedrooms together with three bathrooms, a common kitchen and dining/lounge room with an open fireplace. There is a large balcony opening off the lounge room. Change-overs between parties are on Saturdays and outgoing parties are expected to leave the Lodge clean and secure for the incoming party. Applications may be made for anything from a single bed up to a party booking for the entire 12 beds.



THREDBO LODGE

The Thredbo Lodge is located near the Thredbo Alpine Hotel with easy access from both Friday Drive and Diggings Terrace. There is an unloading bay on the Diggings Terrace level.

On the top floor is 'The Club' style accommodation with 5 twin-bed bedrooms, ample bathroom facilities, a central kitchen, dining room, lounge room with an open log fire and a balcony with views of the mountain.

Also on the top floor is a 4 bed 'Dormitory'. Beds in the 'Dormitory' can be booked in conjunction with any other area of the Lodge or on their own. Occupants of the 'Dormitory', not attached to parties in any of the 'Units', would use 'The Club' facilities. A games room is also on the top floor and this area is for the use of anyone residing in the Lodge.

On the middle floor are two apartments: 'Snowgums' with 4 twin-bed bedrooms and 'Merrits' with 3 twin-bed bedrooms. Both have their own kitchen, bathroom lounge and dining facilities, pot belly fires and access to a balcony.

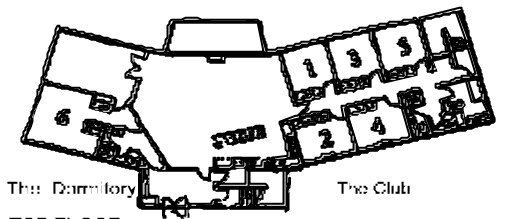
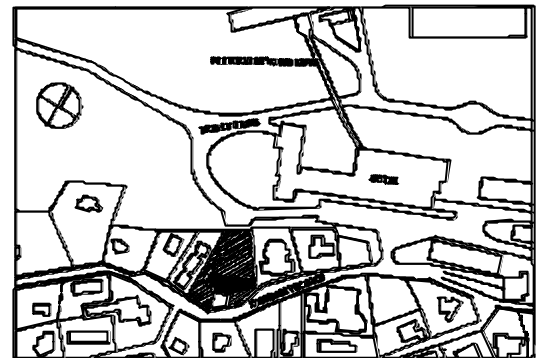
On the bottom floor there is a self-contained Unit, 'The Chalet', with 2 twin-bed bedrooms. The ski room, a sauna, spa, additional bathroom facilities and a workroom are on this level

Limited on-site car parking is available, details of which will be supplied with your booking confirmations

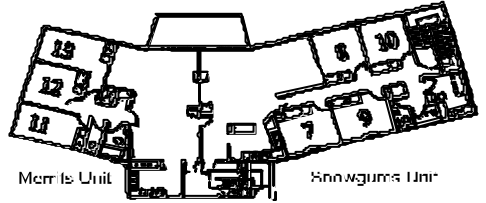
All areas within the Lodge work on a self help basis. The Club does not supply food or other provisions but does supply basic cleaning materials and the like for the care of the building at the start of the season. These should be replenished by Members as needed.

Members (and their guests) **must** clean the accommodation. This includes emptying rubbish bins in bathrooms and dirty linen placed in lounge room, bedrooms tidied and rubbish bins emptied, doonas folded on bed and dirty linen placed in lounge room, kitchen including the oven and stove, wiping out the refrigerator and microwave, washing up done, fireplace cleaned and set.

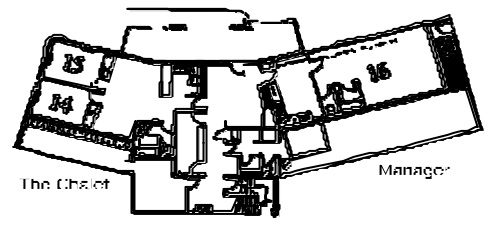
Commercial cleaners, operating on Saturday between 9.30 a.m. and noon, **only clean the bathrooms, vacuum/mop common areas and replace linen.** Linen will be provided and a laundry service used to clean sheets, pillow slips and tea towels. Blankets/doonas are supplied; bath towels are not supplied. Applications may be made for anything from a single bed to group bookings for one or more of the self-contained areas of the Lodge.



The Dormitory The Club
TOP FLOOR



Merrits Unit Snowgums Unit
MIDDLE FLOOR



The Chalet Manager
GROUND FLOOR